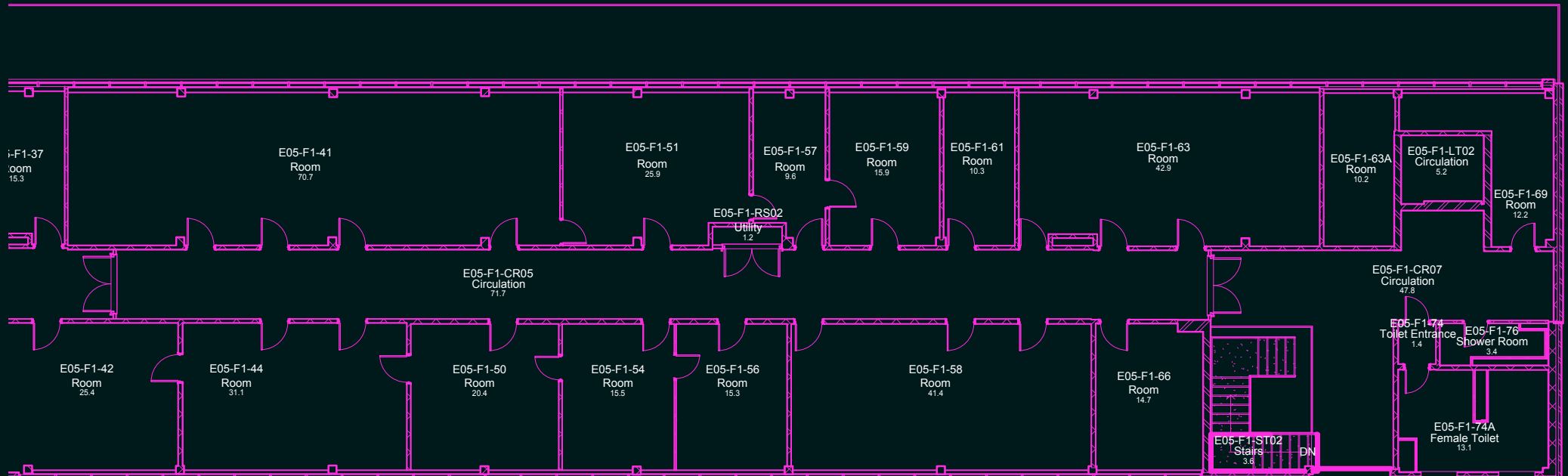


**CULHAM
CAMPUS**

COLLABORATION SPACES



COLLABORATION SPACES



NEWTON ROOM

A bright corner room suiting 3-4 desks (215 sq/ft/20sq.m). Facing an attractive modern quad area with outdoor facilities and pods. Centrally located close to amenities and the Campus Costa & restaurant.

- 12 Month License agreement
- Includes - shared breakout area & tea point, desks chairs and locker in a secure room, WiFi, utilities, cleaning, building insurance, building & estate management.
- Excludes - business rates, dedicated reception, conference room hire (available under a separate hire charge), printing and post management facilities.



CARBON ROOM

A small room suiting 2-3 desks (154 sq. ft/14. 3sq.m), benefiting from good levels of natural light facing an attractive modern quad area with outdoor facilities and pods. Centrally located close to amenities and the Campus Costa & restaurant.

- 12 Month License agreement
- Includes - shared breakout area & tea point, desks chairs and locker in a secure room, WiFi, utilities, cleaning, building insurance, building & estate management.
- Excludes - business rates, dedicated reception, conference room hire (available under a separate hire charge), printing and post management facilities.

HELIUM ROOM

A small room suiting 2-3 desks (157 sq. ft/14.6 sq.m), benefiting from good levels of natural light facing an attractive modern quad area with outdoor facilities and pods. Centrally located close to amenities and the Campus Costa & restaurant.

- 12 Month License agreement
- Includes - shared breakout area & tea point, desks chairs and locker in a secure room, WiFi, utilities, cleaning, building insurance, building & estate management.
- Excludes - business rates, dedicated reception, conference room hire (available under a separate hire charge), printing and post management facilities.



ATOM ROOM

A small room suiting 2-3 desks (157 sq. ft/14.6 sq.m), benefiting from good levels of natural light facing an attractive modern quad area with outdoor facilities and pods. Centrally located close to amenities and the Campus Costa & restaurant.

- 12 Month License agreement
- Includes - shared breakout area & tea point, desks chairs and locker in a secure room, WiFi, utilities, cleaning, building insurance, building & estate management.
- Excludes - business rates, dedicated reception, conference room hire (available under a separate hire charge), printing and post management facilities.

STAR ROOM

A small room suiting 2-3 desks (152 sq. ft/14. 1sq.m), benefiting from good levels of natural light facing an attractive modern quad area with outdoor facilities and pods. Centrally located close to amenities and the Campus Costa & restaurant.

- 12 Month License agreement
- Includes - shared breakout area & tea point, desks chairs and locker in a secure room, WiFi, utilities, cleaning, building insurance, building & estate management.
- Excludes - business rates, dedicated reception, conference room hire (available under a separate hire charge), printing and post management facilities.

HYDROGEN ROOM

A small room suiting 2-3 desks (167 sq. ft/15.5 sq.m). Facing attractive green space and centrally located close to amenities and the Campus Costa & restaurant.

- 12 Month License agreement
- Includes - shared breakout area & tea point, desks chairs and locker in a secure room, WiFi, utilities, cleaning, building insurance, building & estate management.
- Excludes - business rates, dedicated reception, conference room hire (available under a separate hire charge), printing and post management facilities.

ENERGY ROOM

Largest collaboration room suiting 4-7 desks (329 sq/ft/30. 53 sq.m).

Flagship corner room facing attractive green space and centrally located close to amenities and the Campus Costa & restaurant.

- 12 Month License agreement
- Includes - shared breakout area & tea point, desks chairs and locker in a secure room, WiFi, utilities, cleaning, building insurance, building & estate management.
- Excludes - business rates, dedicated reception, conference room hire (available under a separate hire charge), printing and post management facilities.

EINSTEIN ROOM

Smallest collaboration room suiting 1-2 desks (138 sq. ft/12.8 sq.m).

Facing attractive green space and centrally located close to amenities and the Campus Costa & restaurant.

- 12 Month License agreement
- Includes - shared breakout area & tea point, desks chairs and locker in a secure room, WiFi, utilities, cleaning, building insurance, building & estate management.
- Excludes - business rates, dedicated reception, conference room hire (available under a separate hire charge), printing and post management facilities.



BE PART OF THE UK'S LEADING FUSION AND AI CLUSTER

Join a thriving ecosystem of innovators and world-class scientists in the heart of Culham Campus.

Get in touch today to secure your space.

**Culham Campus,
Abingdon,
Oxfordshire,
OX14 3DB**



Easy access to A415 → A34 → M40



Heathrow ~ Approximately 60 minutes by car to Heathrow



10-minute walk to Culham Station – direct to Oxford, Didcot Parkway, London Paddington



Located near the historic market town of Abingdon, offering supermarkets, shops and hotel accommodation.

t: +44 (0)1235 466 900

e: commercial.property@ukaea.uk

w: www.culham.org.uk

CULHAM CAMPUS

Whilst every care has been taken in the preparation of these particulars, their accuracy is not guaranteed, and they do not constitute any part of an offer or contract. All measurements are approximate and for illustrative purposes only. Interested parties must satisfy themselves by inspection or otherwise as to the correctness of the information provided.